

RUBBER EXPANSION JOINT, TYPE ERV-GR



APPLICATIONS

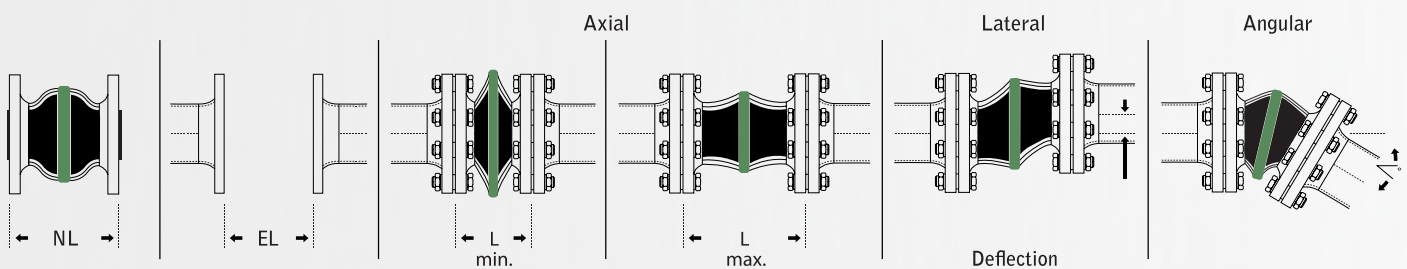
Grünring rubber expansion joints for chemicals, acids, alkalis and aggressive chemical waste water. For oil-contaminated compressed air up to + 90°C. Temperature range (depending on medium) -20°C up to +100°C, temporarily up to +110°C. Electrically non-conductive. For high vacuum a vacuum support ring must be used.

TECHNICAL DESCRIPTION

Liner : Hypalon (CSM), seamless, high abrasion resistant.
 Reinforcement : PA textile cord.
 Cover : Hypalon (CSM).
 Marking : Green band, ERV DN, PN, production date

FLANGES

Swivelling, PN 10/16, carbon steel, zinc plated.
 Other flange standards and materials on request.
 For rubber expansion joints DN25 bellows DN32 are used.

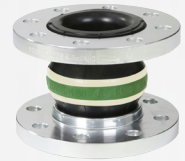


DATA TABLE

NL Neutral Length	DN	EL min.	EL max.	L min.	L max.	Lateral Deflection	Angular	Max. Pressure	Max. Pressure
mm	mm	mm	mm	mm	mm	mm	°	bar/+50°C	bar/+100°C
130	25-80	120	135	100	150	+/- 30	+/- 30	16	10
130	100-150	120	135	100	150	+/- 30	+/- 20	16	10
130	200	115	140	105	160	+/- 30	+/- 10	16	10
130	250-300	125	140	120	160	+/- 15	+/- 5	16	10
200	350-600	190	210	160	235	+/- 30	+/- 8	10	6
250	450	240	260	205	285	+/- 35	+/- 10	10	6
260	700	250	270	220	290	+/- 30	+/- 5	10	6

*For combined movements, consult AmniTec BV.

RUBBER EXPANSION JOINT, TYPE VITEX »



APPLICATIONS

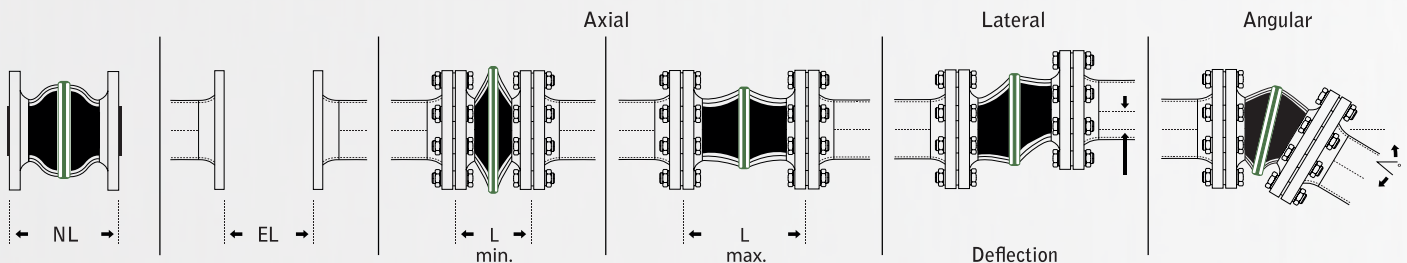
Vitex rubber expansion joints in high-tech design with seamless FPM-lining, a flexible safety compensator for petrochemical facilities, engines, power stations and flue gas desulphurisation plants. Suitable for strain with aggressive media. Very good resistant against hot oils, benzene, xylene, fuels with an aromatic content of more than 50%, bio diesel, aromatic/ chlorinated hydrocarbons and mineral acids. Excellent resistant against weathering, ageing and ozone. Temperature range (depending on medium) -15°C up to +90°C, temporarily up to +130°C. For high vacuum a vacuum support ring must be used.

TECHNICAL DESCRIPTION

Liner : FPM, seamless, no permeation, electrically non-conductive
 Reinforcement : PA textile cord, specially rubberized
 Cover : ECO, electrically dissipative
 Marking : White-Green-White band, ERV DN, PN 16, production date

FLANGES

Swivelling, PN 10/16, carbon steel, zinc plated.
 Other flange standards and materials on request.
 For rubber expansion joints DN25, bellows DN32 are used.



DATA TABLE

NL Neutral Length	DN	EL min.	EL max.	L min.	L max.	Lateral Deflection	Angular	Max. Pressure	Max. Pressure
mm	mm	mm	mm	mm	mm	mm	°	bar/+50°C	bar/+100°C
130	25-80	120	135	100	150	+/- 30	+/- 30	16	10
130	100-150	120	135	100	150	+/- 30	+/- 20	16	10
130	200	115	140	105	160	+/- 30	+/- 10	16	10

*For combined movements, consult AmniTec BV.

RUBBER EXPANSION JOINT, TYPE ERV-W



APPLICATIONS

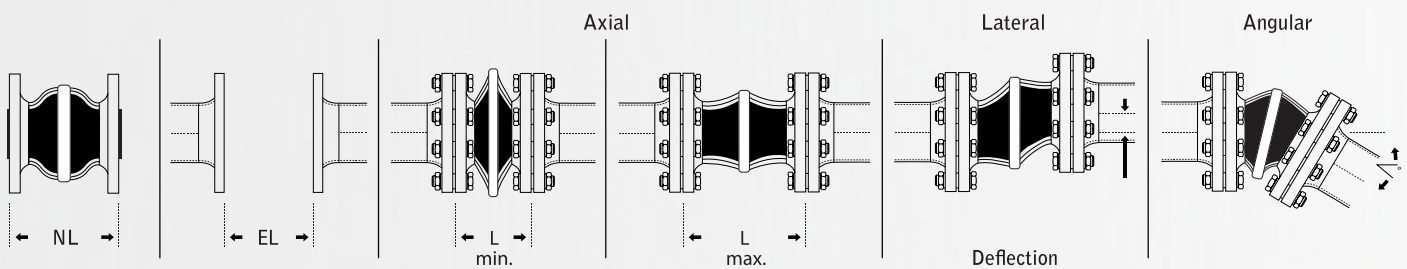
Weissring rubber expansion joints for foodstuffs, also oil and fat containing foodstuff. Liner conforms to German foodstuff regulations. Not approved for drinking water. Temperature range (depending on medium) -20°C up to +90°C, temporarily up to +100°C. Electrically non-conductive. For high vacuum a vacuum support ring must be used.

TECHNICAL DESCRIPTION

Liner : NBR bright coloured, seamless, abrasion resistant
 Reinforcement : PA textile cord
 Cover : Chloroprene CR
 Marking : White band, ERV DN, PN, production date

FLANGES

Swivelling, PN 10/16, carbon steel, zinc plated.
 Other flange standards and materials on request.
 For rubber expansion joints DN25 bellows DN32 are used.



DATA TABLE

NL Neutral Length	DN	EL min.	EL max.	L min.	L max.	Lateral Deflection	Angular	Max. Pressure	Max. Pressure
mm	mm	mm	mm	mm	mm	mm	°	bar/+50°C	bar/+100°C
130	25-80	120	135	100	150	± 30	± 30	16	10
130	100-150	120	135	100	150	± 30	± 20	16	10
130	200	115	140	105	160	± 30	± 10	16	10
130	250-300	125	140	120	160	± 15	± 5	16	10
200	350-600	190	210	160	235	± 30	± 8	10	6
250	450	240	260	205	285	± 35	± 10	10	6

*For combined movements, consult AmniTec BV.